

Imperial Blue 2656

Water Soluble Dye

Color Intensity Graph

Note: Approximate color for aqueous applications in clear solutions*.



Physical & Chemical Properties

Chemical nature: water soluble anthraquinone dye

Form: powder

Pure Dye Content: >80% by weight

Chemical Formula: $C_{20}H_{19}N_2NaO_5S$

Molecular weight: 422.43

Ionic nature: anionic

Bulk density: variable, typically 0.55 - 0.75 g/cm³

Solubility: 21.35 g/l @20°C

slight solubility in glycols and alcohols

Shade: Pastel blue - deep blue depending on concentration

Wavelength of maximum absorption (λ_{max}): 590 nm (water)

Light fastness: good (ISO Rating: 6)

Recommended pH range is 2.0-12.0,

above average stability in alkaline solutions

Melting point: 349.8°C (1013 kPa)

Common Applications

Home, Industrial & Institutional Cleaning Products (HI&I)

Chemical Compounding Textiles (wool, nylon, leather)

Typical Use Rates

This dye can be added at varying concentrations to produce shades ranging in intensity from light to strong. The following rates represent typical concentrations in various applications.

Tinting Liquid Products

Light	10 mg/l	(1-lb dye per 12,000 gal product)
Medium	30 mg/l	(1-lb dye per 4000 gal product)
Strong	70 mg/l	(1-lb dye per 1700 gal product)

Textiles

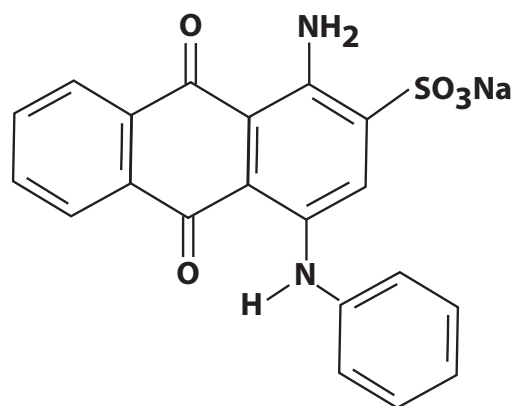
Light	0.1 % owf	(1-lb per 1,000 lbs of product)
Medium	0.5 %w/w	(1-lb per 200 lbs of product)
Strong	2.0 %w/w	(1-lb per 50 lbs of product)

Identification

Color Index Generic Name:	Acid Blue 62
Color Index Constitution Number:	62045
Koch Color Item Code:	D2565P
CAS Number	4368-56-3
EC (EINECS) Number	224-460-9
PubChem CID	23678881
RTECS:	CB1092000
Synonyms	Telon Blue RRL

TSCA Name (USA): 2-Anthracenesulfonic acid, 1-amino-4-(cyclohexylamino)-9,10-dihydro-9,10-dioxo-, sodium salt (1:1)

EINECS Name: Sodium 1-amino-4-(cyclohexylamino)-9,10-dihydro-9,10-dioxoanthracene-2-sulphonate



Standard Packaging

1-lb jar (12/cs) 5-lb jar (4/cs) 25-lb pail 100-lb drum
Custom packaging available.

Transportation

Shipping: Not regulated by US DOT/IATA . Contains no dangerous goods.

Storage & Handling

Storage: Store in a closed container in a dry environment.

Shelf Life: 5 years.